

# SafeSheath® Sealing Adapter

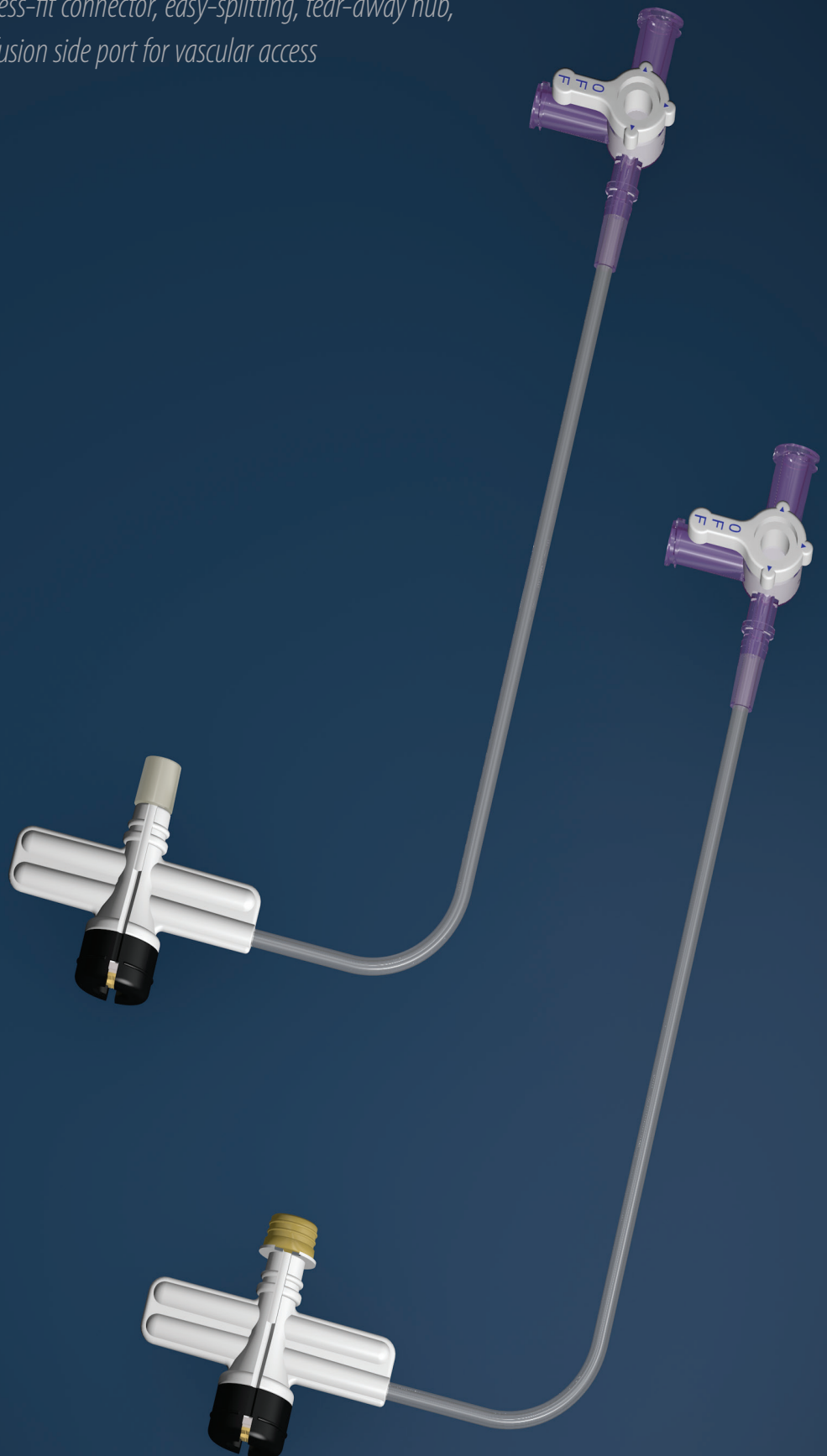
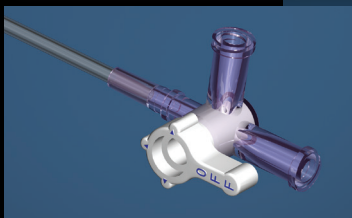
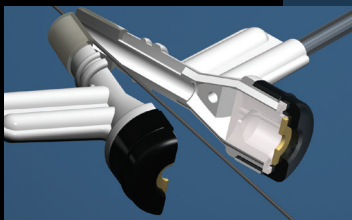
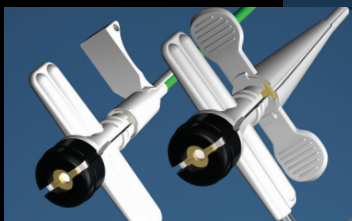
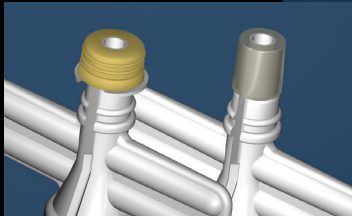
Hemostatic Valve for Medtronic and St. Jude Medical Introducers

*with press-fit connector, easy-splitting, tear-away hub,  
and infusion side port for vascular access*

## Available Models for

Medtronic  
Attain™ Catheters

St. Jude Medical  
CPS™ Introducers



The H. Lee SafeSheath® Sealing Adapter provides the advantages of the SafeSheath system while employing a Medtronic Attain™ or St. Jude Medical CPS® introducer.

#### FEATURES

- ▶ Unique press-fit connector for Medtronic Attain introducers
- ▶ Slot-locking mechanism designed to securely attach to St. Jude Medical CPS introducers.
- ▶ Fluid- and air-tight seal between Sealing Adapter and introducer
- ▶ Innovative tear-away design with break-away hemostasis valve
- ▶ Remains hemostatic when single or multiple wires are within it, as well as when leads need to be introduced or exchanged
- ▶ Reduced risk of blood loss and air embolism
- ▶ A side port for “keep open” infusion

#### PRODUCT DESCRIPTION

The SafeSheath Sealing Adapter provides the convenience of the SafeSheath splittable valved system when using a Medtronic Attain™ or St. Jude Medical CPS® Introducer.

Every SafeSheath Sealing Adapter provides an air- and fluid-tight seal between it and the introducer. Its specially-designed valve allows insertion of single or multiple wires while remaining hemostatic, reducing back bleeding and the possibility of air embolism during lead introduction or exchange.

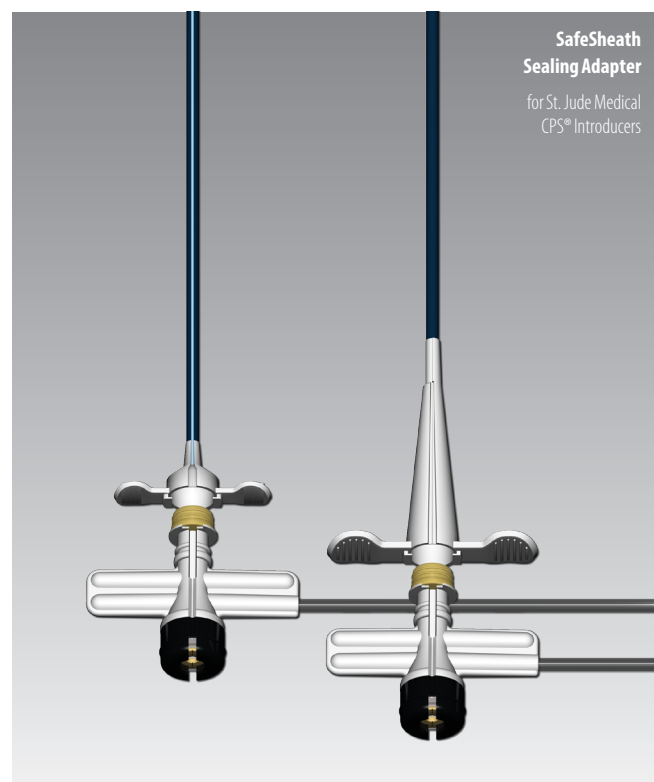
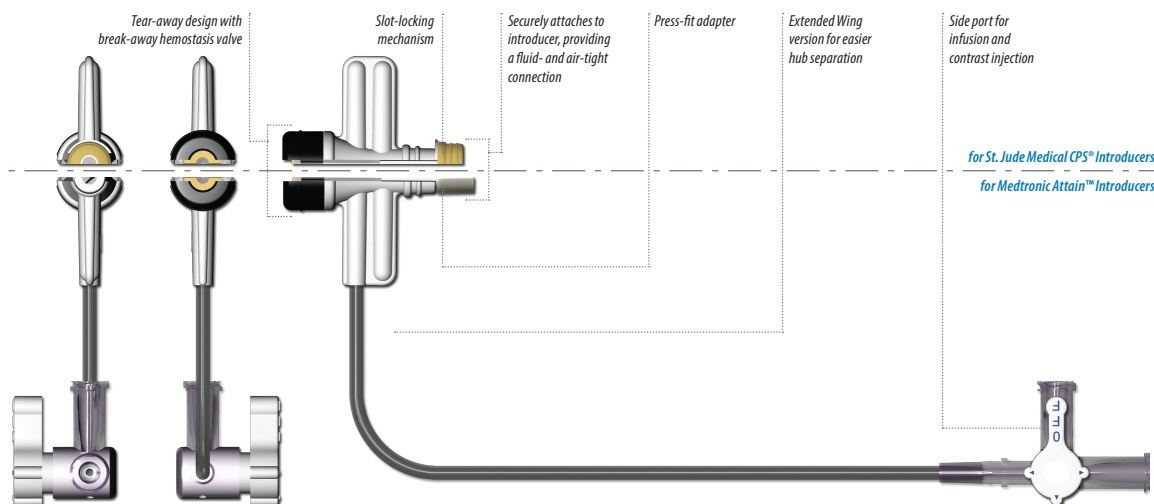
The convenient sideport allows aspiration and flushing of the introducer, as well contrast and fluid administration. And after lead or catheter placement, the easy-splitting, break-away hub greatly simplifies device removal.

Each Sealing Adapter for the Medtronic Attain comes with a press-fit connector insuring a secure attachment between adapter and sheath.

The slot-locking mechanism of the Sealing Adapter for St. Jude Medical CPS introducers creates a tight seal with both braided and non-braided models.

## SafeSheath® Sealing Adapter

### Hemostatic Valve for Medtronic or St. Jude Medical Introducers



#### SafeSheath Sealing Adapter for Medtronic Attain™ Introducers Hemostatic tear-away valve w/side port

Model	Size	Description
SS-SA-09	9.0 French	Standard Wing for Attain Introducers
SS-SA-EW-09	9.0 French	Extended Wing for Attain Introducers

#### SafeSheath Sealing Adapter for St. Jude Medical CPS® Introducers Hemostatic tear-away valve w/side port

Model	Size	Description
410195	9.0 French	Standard Wing for CPS Introducers with Slot-Locking Mechanism

#### ORDERING INFORMATION

Each **SafeSheath Sealing Adapter** kit includes:

One tear-away sealing adapter w/side port

Five (5) kits per box

The H. Lee SafeSheath® hemostatic splittable sheath is protected by Patent Insurance. USA Patent 8,048,061. Canadian Patent 2,493,189. European Patent EP1545677. Japanese Patent 4705779. Other Worldwide Patents pending.

SafeSheath is a registered trademark of Pressure Products Medical Supplies, Inc. Attain is a trademark of Medtronic, Inc. CPS is registered trademark of St. Jude Medical.