

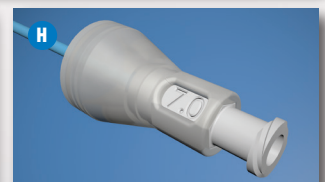
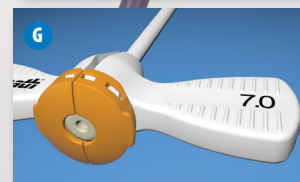
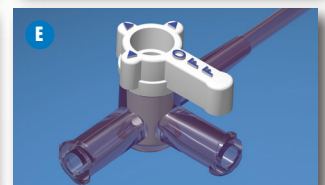
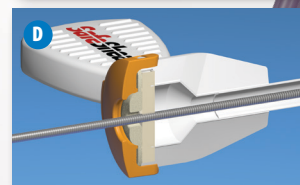
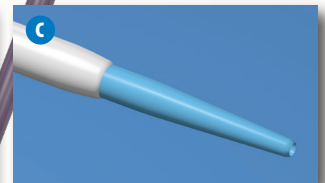
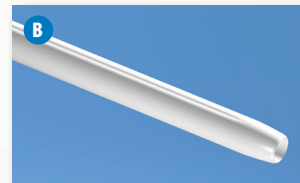
# SafeSheath® II

## Hemostatic Peel-away Introducer System for Vascular Access

*with low insertion/withdrawal force lubricated valve,  
ergonomically-designed, easy-splitting hub, extruded score  
line sheath, infusion side port and snap-fit dilator*

### FEATURES

- A.** Standard 13cm length for access to subclavian vein, and 23 cm Long model for access beyond the right subclavian-SVC junction
- B.** Extruded score line peel-away sheath for clean, even peeling during removal
- C.** Longer, smoother sheath tip to dilator transition for ease during sheath insertion
- D.** Lubricated hemostatic valve with low insertion and withdrawal forces yields greater control during lead manipulation and reduces risk of blood loss and air embolism
- E.** Convenient sideport with three-way stopcock for infusion and contrast injection, like the original SafeSheath
- F.** Available in a wide range of French sizes
- G.** French size printed on handle and indicated by color-coded introducer cap
- H.** Elastomer snap-locking dilator connector like the original SafeSheath with French size embossed on handle
- I.** Ergonomic, easy-splitting break-away hub



In 1994, Pressure Products revolutionized vascular access with the introduction of the SafeSheath® hemostatic-valved, peel-away introducer system, providing problem-free vascular access during device lead placement for more than 18 years.

Now, SafeSheath II advances the original design, continuing to revolutionize venous access by setting new standards for performance and features while facilitating better outcomes.

#### PRODUCT DESCRIPTION

The SafeSheath II family of introducers combines the time-tested design of a tear-away sheath and hemostatic valve with new and improved features to reduce back bleeding and the possibility of air embolism during venous access.

**SafeSheath II** Introduced into the subclavian vein in the standard manner, the hemostatic valve of the SafeSheath II seals the device during lead introduction and positioning.

The easy splitting, ergonomically-shaped break-away hub greatly simplifies sheath removal after lead or catheter placement. Extruded score line construction ensures a clean, even peel every time. A new elastomer snap-locking dilator connector assures a firm attachment to the sheath.

The three-way stopcock side port provides a convenient means of aspirating and flushing the introducer, as well as for contrast and fluid administration. Finally, the advanced design of the lubricated hemostatic valve enables low insertion and withdrawal forces, delivering greater control during lead manipulation.

**SafeSheath II Long** The 23cm Long provides access beyond the right subclavian-SVC junction, from both the left cephalic and subclavian veins. The extra length helps when upgrading existing systems by the addition of new leads and for atypical venous access sites—axillary or femoral. It also acts as a 'supporting' platform for the introduction of defibrillator leads.

Pressure Products is proud to offer the entire family of SafeSheath and SafeSheath II introducers, as well as a complete line of vascular access and lead delivery systems and accessories.

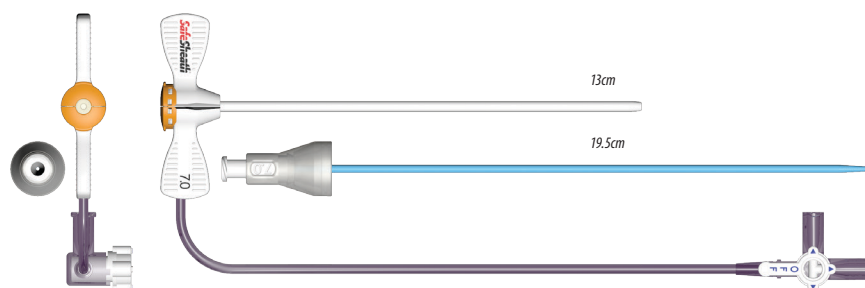
Visit us at [www.pressure-products.com](http://www.pressure-products.com) for more information.

# SafeSheath® II

## Hemostatic Peel-away Introducer System for Vascular Access

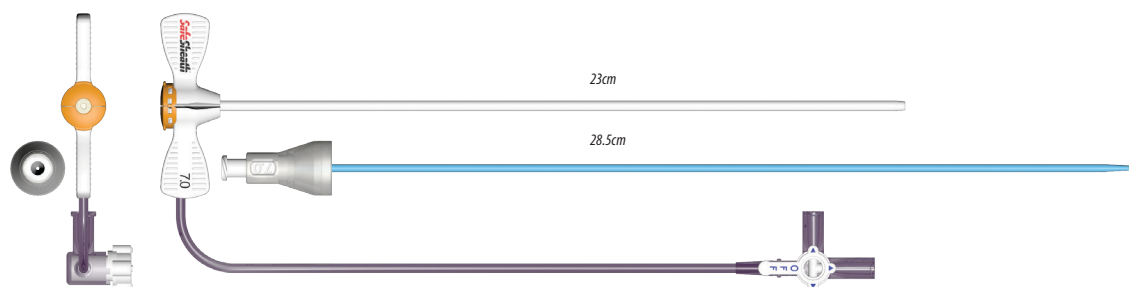
#### SAFESHEATH II

Used for lead introduction and positioning during cardiac resynchronization therapy.



#### SAFESHEATH II LONG

For access beyond the right subclavian-SVC junction.

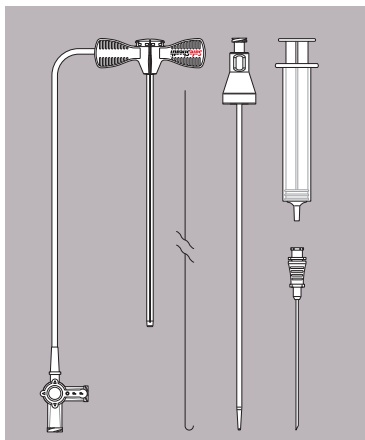


#### ORDERING INFORMATION

Each **SafeSheath II** Introducer System kit includes:

- ▶ One tear-away sheath w/side port
- ▶ One dilator
- ▶ One 18g needle
- ▶ One 10cc syringe
- ▶ One guidewire (Standard-50cm / Long-60cm)

Five (5) kits per box



SafeSheath is a registered trademark of Pressure Products Medical Supplies, Inc.

#### SafeSheath II Tear-away valved hemostatic sheath system w/side port

Model	Size	Hub Color	Length	Dilator Length
SS6	6.0 French	Green	13cm	19.5cm
SS7	7.0 French	Orange	13cm	19.5cm
SS8	8.0 French	Blue	13cm	19.5cm
SS85	8.5 French	Light Blue	13cm	19.5cm
SS9	9.0 French	Black	13cm	19.5cm
SS95	9.5 French	Light Black	13cm	19.5cm
SS10	10.0 French	Fuschia	13cm	19.5cm
SS105	10.5 French	Light Fuschia	13cm	19.5cm
SS11	11.0 French	Yellow	13cm	19.5cm
SS12	12.0 French	Brown	13cm	19.5cm
SS125	12.5 French	Light Brown	13cm	19.5cm

Guide Wire for standard SafeSheath II is 50cm long with O.D. of .038"

#### SafeSheath II Long Tear-away valved hemostatic sheath system w/side port

Model	Size	Hub Color	Length	Dilator Length
SSL6	6.0 French	Green	23cm	28.5cm
SSL7	7.0 French	Orange	23cm	28.5cm
SSL8	8.0 French	Blue	23cm	28.5cm
SSL9	9.0 French	Black	23cm	28.5cm
SSL10	10.0 French	Fuschia	23cm	28.5cm
SSL105	10.5 French	Light Fuschia	23cm	28.5cm
SSL11	11.0 French	Yellow	23cm	28.5cm

Guide Wire for SafeSheath II Long is 60cm long with O.D. of .038"